

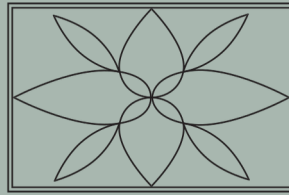


WEDDINGS AT STRAWBERRY HILL  
HOUSE & GARDEN









## A Magical Wedding Venue

Strawberry Hill House & Garden is a totally unique and magical setting for your wedding ceremony and reception. This fairy-tale gothic 'castle' was created in the 18th century by the famous writer and collector, Horace Walpole. It is Grade I listed and is internationally famous as Britain's finest example of domestic Georgian Gothic revival architecture.

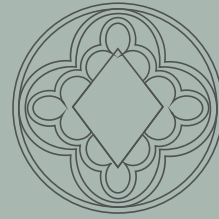
An oasis of calm and tranquility, close to the river in Twickenham, the venue has the benefit of extensive grounds and Grade II\* listed gardens, whilst being close to good transport links with easy access to London and the surrounding areas.











## The Library

The Library is a warm and impressive setting for meeting with the registrars, a smaller drinks reception, wedding photographs or to take a moment and practice your speech.

Designed to Walpole's specification, including bookcases in the form of gothic arches based on the side door of the choir in old St Paul's Cathedral, this room housed many of Walpole's collection of 7,000 books.











## The Gallery

The showpiece of the House, this breathtaking room was completed in 1763 for the display of Walpole's pictures and for the purpose of entertaining.

The completion of The Gallery inspired Walpole to make his famous admission, "I begin to be ashamed of my own magnificence". It is this 'magnificence' that makes it a perfect centrepiece for your day.

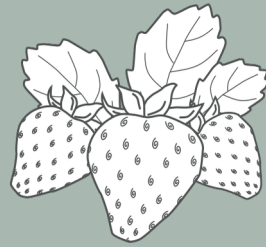
The room has a maximum capacity of 66-84 guests.







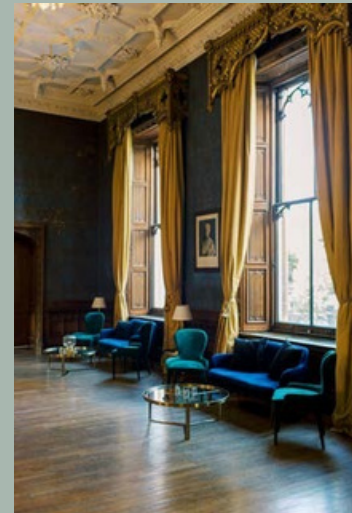




## The Waldegrave Suite

Lady Waldegrave's suite of historic rooms was originally designed for entertaining guests. Continue your celebrations in this opulent setting with rooms for dining and dancing.

This room has capacity for up to 105 for seated dining, extending to 200 for additional evening guests.











## The Grounds & Garden

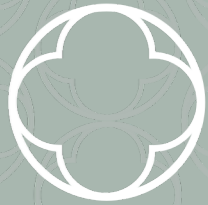
Inspired by the ideas behind the English Landscape Movement, Horace Walpole created a romantic garden to complement his Gothic castle.

Following the ceremony, enjoy drinks and canapés amongst the historic lime grove and drifts of wildflowers on the lawns. It is possible to hire ground space in the garden to host a larger reception using a marquee.

The capacity for a marquee in the garden is 150.

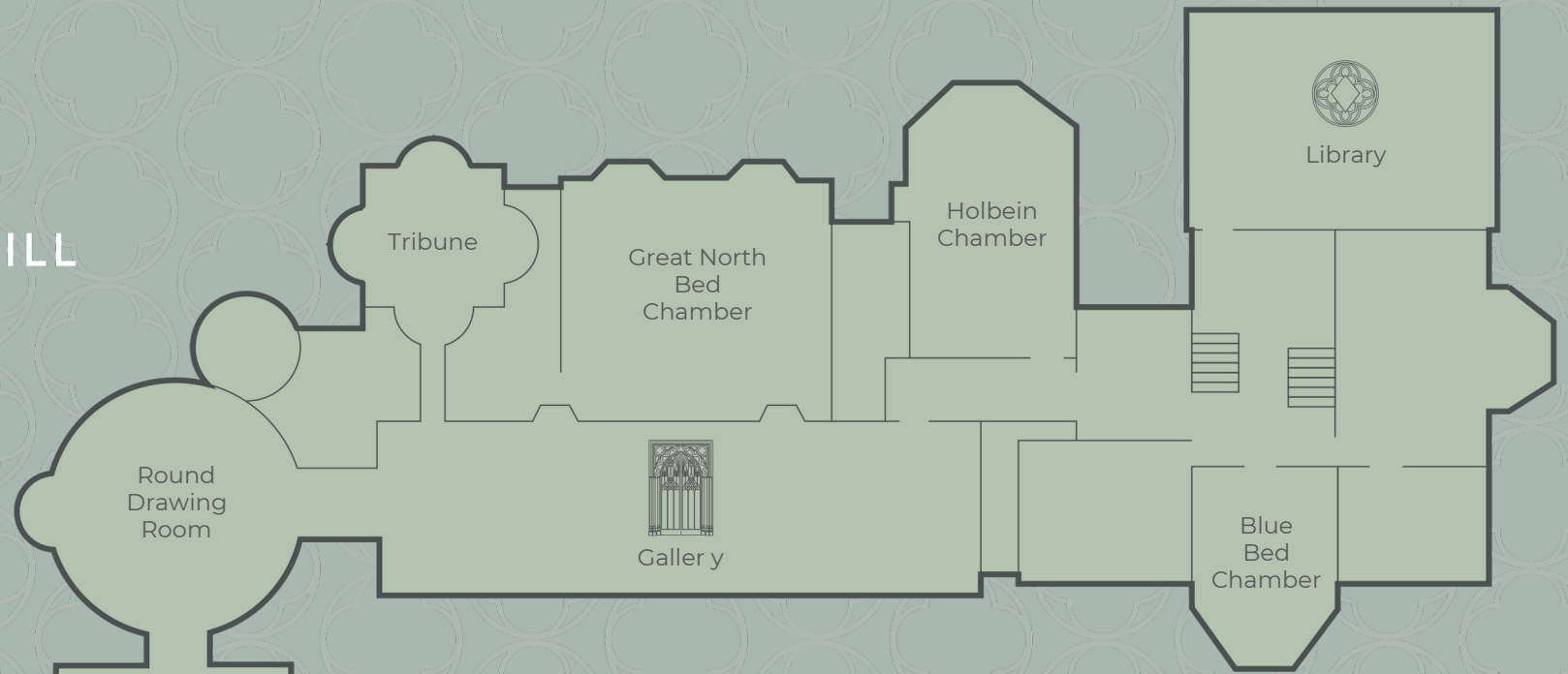






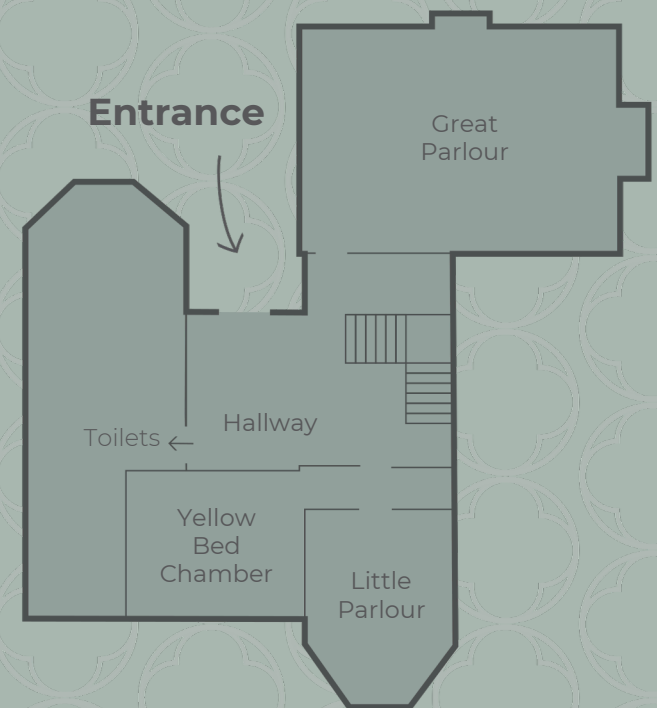
# STRAWBERRY HILL

House & Garden



**1st  
Floor**

  
**Exit to Gardens  
& Ground**  
via Iron  
Staircase



**Ground  
Floor**



# Bespoke Dining

Choose from our talented catering partners to create a bespoke dining experience, whether that is for a formal wedding breakfast or a more relaxed evening event.

Our catering partners have been carefully chosen to suit a variety of different tastes and styles and will help you create the perfect menu for your special day.





# Planning your Day

Your experienced Strawberry Hill House venue coordinator will help guide you through planning your day. This schedule is designed to give you an idea of how your day might work.

## BEHIND THE SCENES

Your chosen florists and caterers arrive to prepare the space and set-up.



## ARRIVAL

Your guests start to arrive and take their seats in the opulent Gallery. There may be time for them to have a short stroll in the gardens to take photos.



## SPACE TO BREATHE

Arrive early to use the beautiful blue bedchamber or Holbein Chamber to make last-minute adjustments, take pre-ceremony photographs or to simply enjoy the space.

## BEFORE THE CEREMONY

Meet with the Registrar for the pre-ceremony interview in the timeless setting of The Library.



## IT'S YOUR MOMENT

Walk up the aisle in the stunning Gallery where your Civil Ceremony will take place.





### RAISE A GLASS

Celebrate with drinks and canapes in the beautiful grounds.



### TIME TO DINE

Continue your celebrations in the magnificent Waldegrave Drawing Room.



### RECORD THE MOMENT

You will be spoilt for choice for backdrops for your wedding photos.



### SPEECHES, TOASTS & CUTTING THE CAKE

Toast the new couple and enjoy the speeches.



### TIME TO PARTY

As evening guests arrive, put your dancing shoes on and head to the Senior Common Room.



### CARRIAGES

The end of a wonderful day but the beginning of many happy memories.



# Wedding Hire Fee

2025 - £8,000 + VAT

2026 - £10,000 + VAT

## Inclusions:

Exclusive use of the venue: Strawberry Hill House - 9am-5pm;  
The Waldegrave Suite - until midnight

- Venue Coordinator
- Dining tables and chairs
- Use of the historic rooms and grounds for photographs

## Exclusions:

The venue is for dry hire only and does not include:

- Registrar
- Catering
- Flowers
- Tableware and linens

A list of preferred wedding suppliers is available upon request.





# Civil Ceremony Hire Fee

2025 - £1,300 + VAT

2026 - £1,500 + VAT

## Inclusions:

The Gallery is licensed for civil ceremonies and is offered for 2-hour hire on Thursday and Fridays.

- Chairs and room set up for ceremony
- Use of the historic rooms and grounds for photographs

## Exclusions:

The Gallery is offered for dry hire and does not include:

- Registrar
- Flowers

N.B Additional hire for drinks reception following the ceremony is available upon request.





# Location and Transport Links

## By Train

The House is a 5-minute walk from Strawberry Hill Station. Trains run in both directions in a circular route from London Waterloo. By underground take the District Line to Richmond followed by bus or train

## By Bus

The 33 bus runs between Hammersmith and Fulwell via Twickenham and Richmond. This route calls at Richmond Station and is useful for visitors travelling via the District Line from central London.

## By Car

There are 25 parking spaces and an additional 25 spaces available in our secondary car park. If you do need to travel by car, the postcode is TW1 4ST.





# Testimonials

*“Strawberry Hill House looks like something out of a fairytale and our guests were wowed by the House and the Grounds. The Gallery was the perfect setting for the wedding ceremony.”*

Gabby & Felix

*“Strawberry Hill House is such a unique venue, and we had many guests from London and abroad commenting on how much they loved the contrast between the different rooms in the House and what a perfect setting it was.”*

Jiedi & Kingma

*“The Team really thought of everything and made our day so special. They were gracious, attentive, and thoughtful. We had no worries - except to enjoy our day!”*

Divya & Sam









Strawberry Hill House  
268 Waldegrave Road, Twickenham TW1 4ST  
020 8744 1241

[www.strawberryhillhouse.org.uk](http://www.strawberryhillhouse.org.uk)  
[events@strawberryhillhouse.org.uk](mailto:events@strawberryhillhouse.org.uk)



*Image credits: Helen Warner Photography, Matt Chung  
Brochure design by Grace & Bramble Wedding Stationery*